

# Family Hubs Consultation

August 2023

Family  
**HUBS**  
and Start for Life



# Introduction

We would like your feedback on the council's model for delivering Family Hub services in Barnsley.

This is not just about buildings, but how we make sure we have accessible Family Hub services across a community which make sense to families. Family Hub services will be available in local areas and delivered from a range of venues.

As part of this development, we are consulting on how we develop some of our existing Family Centres into six Family Hubs, offering support for families with children from 0 up to 19 years old (up to 25 for young people with special education needs and disabilities – SEND).

We would like you to tell us your views on the proposals by Saturday 23 September 2023 at 5pm when the consultation will close.

The consultation is open to all Barnsley residents and stakeholders.

It is important to hear your views about the key issues the council should consider when developing the hubs and their services across the local area.

# Family Hubs in Barnsley

Family

**HUBS**

and **Start for Life**



In April 2022, the government announced that 75 eligible local authorities would have the opportunity of taking part in the Family Hubs and Start for Life Programme. The programme is supported by a national £300 million government investment up to March 2025.

In February 2023, the government formally announced that Barnsley was one of the local authorities to be awarded a funding grant of £3.4 million up to March 2025.

Family Hub services offer information, help and support to families from conception up until age 19 (or 25 for young people with SEND). They bring together staff working across a range of different services, including the council, health and education along with voluntary and community organisations.

The proposed Family Hub buildings will offer guidance and advice on a range of circumstances. As well as access to support in Family Hub buildings, families will also have access to a range of family hub services across each Family Hub area and online as part of our virtual Family Hub offer.

Family hub services will offer a wide range of services to support children, young people and their families; including targeted early help support, infant feeding, perinatal mental health and wellbeing support, health services, support into employment, parenting support, home learning environment support, housing support, advice and guidance, early years education and stay and play provision.

The Family Hub funding will be used to develop our existing early help provision delivered through a strong Family Hub and Start for Life offer.

# Local Needs Assessment

To help us to make sure that we deliver services that support the needs of our local communities and enable us to deliver them in a way that supports parents and carers to engage and access to the support they need, we have undertaken a local needs assessment. Through a survey and wider engagement activity such as focus groups, we have sought the views of over 550 parents and carers and young people. This insight will be used to inform future ways of working for council services and our partners and help to shape our Family Hub and Start for Life services offer over the next 12 months.



# Our Proposals for Family Hubs

Family

**HUBS**

and Start for Life



**BARNSELY**  
Metropolitan Borough Council



Department  
for Education

# Vision

Our aspiration is for every child to have the best start in life. We want to make sure that all communities and partners work together to make Barnsley the best place that it can be for children growing up by delivering strong early help support for children, young people and their families. Making sure that people get:

- ✓ the **right help**
- ✓ at the **right time**
- ✓ in the **right place**



# Proposal

We propose to transform five of our existing Family Centres and a community building into designated Family Hub sites.

As well as the designated Family Hub buildings the model will use a network of community-based assets such as youth centres, libraries, health centres, schools, early years settings and other community use centres and spaces in Barnsley, all offering access to information, help and support. Staff across a range of different services will work closely together to deliver support for families. It is proposed that there will be one Family Hub in each Area Council area – Central, South, Penistone, North, North East and Dearne.

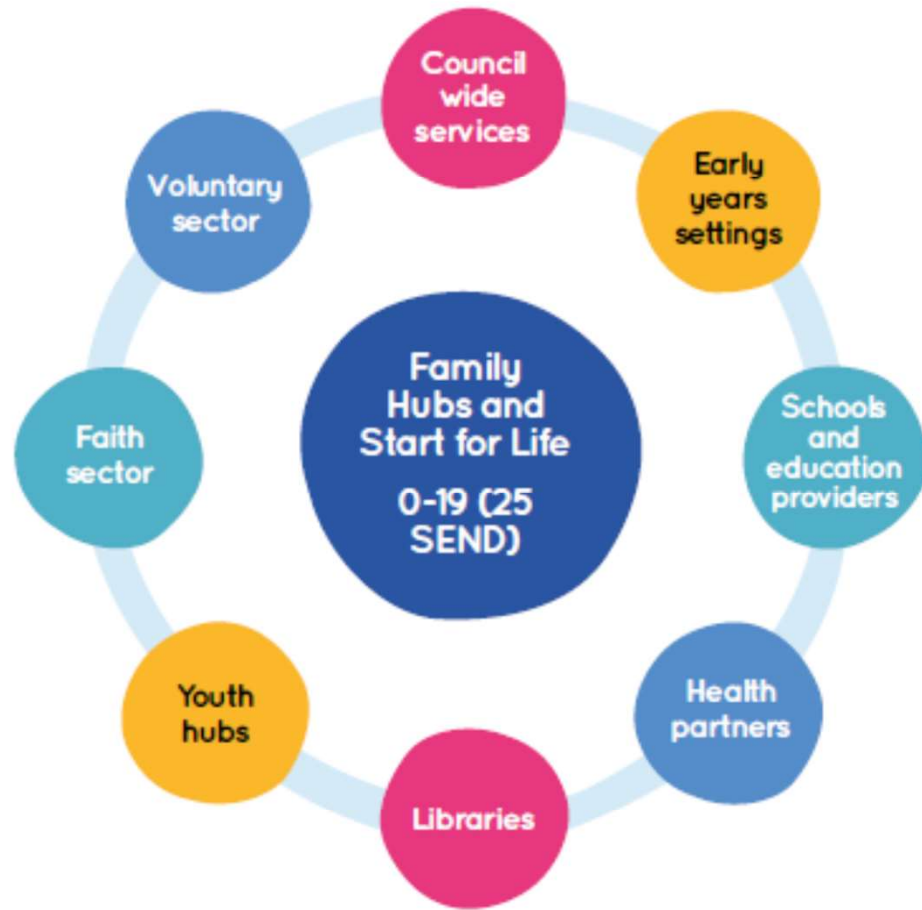
The Family Hubs will work in partnership with a number of services and voluntary sector organisations to provide access to a wide range of activities and support for children, young people and their families as part of the Family Hubs umbrella of support. Support will be delivered physically in the Hub building and across the Hub area using other community buildings.



The key principles of **access**, **relationships** and **connection** are at the heart of Family Hub services. This means that services will be responsive to the needs of the whole family as they arise, using resources flexibly and creatively to meet those needs.

This will make it easier for parents and carers with children of different ages to access the support, information and advice they need.





The proposed model of delivery will be flexible to meet the needs of families utilising the Family Hubs and other community assets to deliver services from, meaning that staff can prepare and respond to needs and deliver frontline services with less emphasis on operating buildings. Sites have been determined based on:

- ✓ suitability, size and readiness to deliver Family Hub services
- ✓ location in relation to levels of deprivation and disadvantaged communities
- ✓ rural isolation

# Proposed Family Hubs Sites

Area Council	Family Hub Location
<b>Central</b>	Kendray & Worsbrough Family Centre Overdale Avenue Worsbrough Barnsley S70 4BD
<b>Dearne</b>	Thurnscoe Family Centre Station Road Thurnscoe S63 0JR
<b>North</b>	Athersley Family Centre Lindhurst Road Athersley North Barnsley S71 3NB
<b>North East</b>	Grimethorpe Family Centre Milefield Primary School Grimethorpe Barnsley S72 7BH
<b>South</b>	Wombwell Family Centre Wombwell IKIC Centre Barnsley Road Wombwell Barnsley S73 8HT
<b>Penistone</b>	Penistone Library High Street Penistone Barnsley S36 6BR (Potential temporary location at Penistone I Know I Can Centre (IKIC))

# Family HUBS and Start for Life



What does this  
mean for  
Barnsley  
Families?

Family

**HUBS**

and Start for Life



**BARNSLEY**  
Metropolitan Borough Council



Department  
for Education

All Barnsley families will be able to access services through the Family Hub model wherever they live.

The proposed model will provide more services and support for families across Barnsley. Families will be able to access support face-to-face in a Family Hub, face-to-face in the community and online.

The proposed model will help us to better provide support for families from conception throughout the early, primary and secondary years, and into early adulthood.

We want to make sure every family knows what and where their local Family Hub is, and know that, if they walk through the front door and access any of our Family Hub services, they'll be welcomed by staff who are able to support their needs, and who can connect them with services that will be able to help.

Family Hub services will make sure the support we give is joined up, and that children and families are better able to access the right help, at the right time.

The location of some of the services currently delivered at Family Centre sites will not change, but for some services, they may be held in different locations across the Family Hub area. We will make sure that families who may be affected by these changes are supported through the transition and continue to be supported to access the services they need.

# Please tell us your views

Complete our online survey by visiting

<https://www.barnsley.gov.uk/consultations/family-hubs-and-start-for-life-consultation/>

Or scan the QR code



Paper copies can also be accessed at your nearest family centre, I know I Can Centre or Library

Please share your views before **5pm** on the **23<sup>rd</sup> September** when the **survey closes**